

Webdom® Satellite

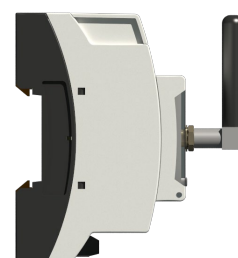
Smart Power Analyzer

Wired/Wireless solution to measure partial consumptions of your electric lines.

Renewables under control.



This device can also regulate the energy generated by the PV inverter automatically, avoiding pouring energy into the grid.



// Technical Specs.

- > x4 CT Clamps – 24 bits.
- > x3 230VAC voltage input – 24 bits.
- > x3 Digital Outputs (relay).
- > x1 Isolated PWM Digital output.
- > x1 Serial port RS485 - Modbus RTU.
- > x1 Radio serial port
- @868MHz - Modbus Protocol.

// Technical Description

The housing has been designed with monitoring oriented applications in mind, for businesses and for buildings or homes. Allows installation without problems in most common distribution boxes found in facilities.

