

# Webdom Datalogger 1.5



## Complete solution for monitoring PV plants, from W to MW

Webdom Datalogger 1.5 is a Monitoring and remote control of Photovoltaic systems greater than 100kW. The Datalogger includes a large number of communication ports for connection with inverters, string boxes, weather sensors and electricity meters. The system is supported by world leading PV manufacturing companies.

*\*Datalogger 3.0  
For lower Power.*

Video cameras module.

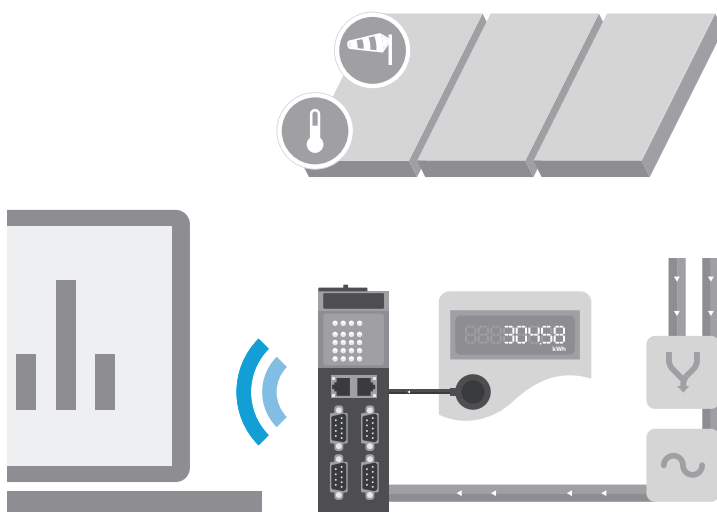


### Technical Specifications.

- 4 x RS232/RS422/RS485 + 1 x RS422/RS485 serial ports, isolated ports (optional) | 2 Ethernet ports 10/100 | 4 x USB ports | 1 x VGA port.
- 4 digital input, + 2 digital output. (Example, for control the substations transformer state).
- 2 x SD card slots (one for boot and another for data).
- LED TX/RX port indicators.
- 10-30VDC (13W) Power Consumption.
- DIN-rail and Wallmounting Options.
- Dimensions 50 x 154 x 127mm, weight 0,45Kg, Aluminium enclosure.

### Specifications.

- Multi-devices system integrated inside one only software interface.
- Sending historical data to multiple servers simultaneously.
- Open protocol for sending data (Tramas, JSON y FTP), can be integrated on any management software platform.
- Sending automatic XML files to an FTP server.
- Local data storage.
- Protection against loss of data in case of Internet failure.
- Multiple client management in a single datalogger.
- Alarm management on the local and server level.
- Daily e-mail summary report.



# VISUAL WEBDOM

Monitoring PV plants, from W to MW

## SUPPORTED PROTOCOLS



## MONITORING SOFTWARE VISUAL WEBDOM

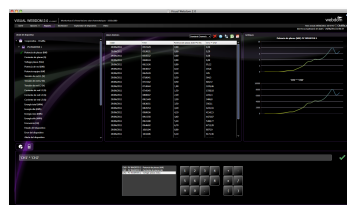
### Instantaneous values

- Analyze** the health of your solar power plant. Using real time and historical data. Get alarms through SMS or Email.
- Customize** the presentation of information as you wish. The dashboard can help you to view the inverter, counter, video and meteo. Compare any channel from any device (Voltage, power, current, ...) graphical or numerical form.

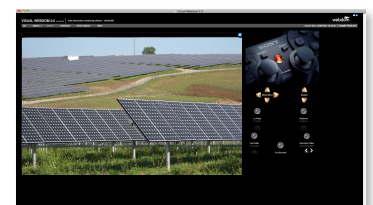
### Information

- Production Summary** using intuitive graphics and tables. Export them to Microsoft Excel spreadsheets.
- Weather Station** as simple as Radiation, wind and temperature sensor, supports professional devices from Davis.
- Video Camera** support, fixed or pan and zoom, supports PlayStation3 joystick interface.

### Previews



**Reports Manager** Compare values of different devices.



**Video Camera** Screenshot with pan and zoom controls.